



# MONTHLY MEMBERSHIP PROGRESS REPORT

District 3231A1

Results as of: 06/30/2019

GMT: JAYESH THAKKAR

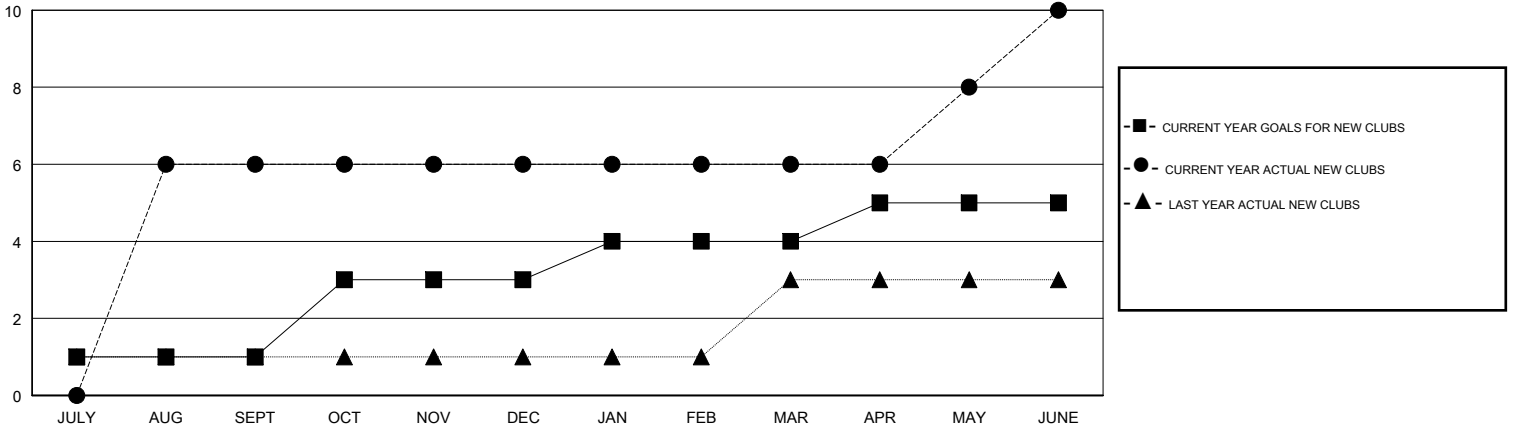
LOCATION INDIA

GMT CA

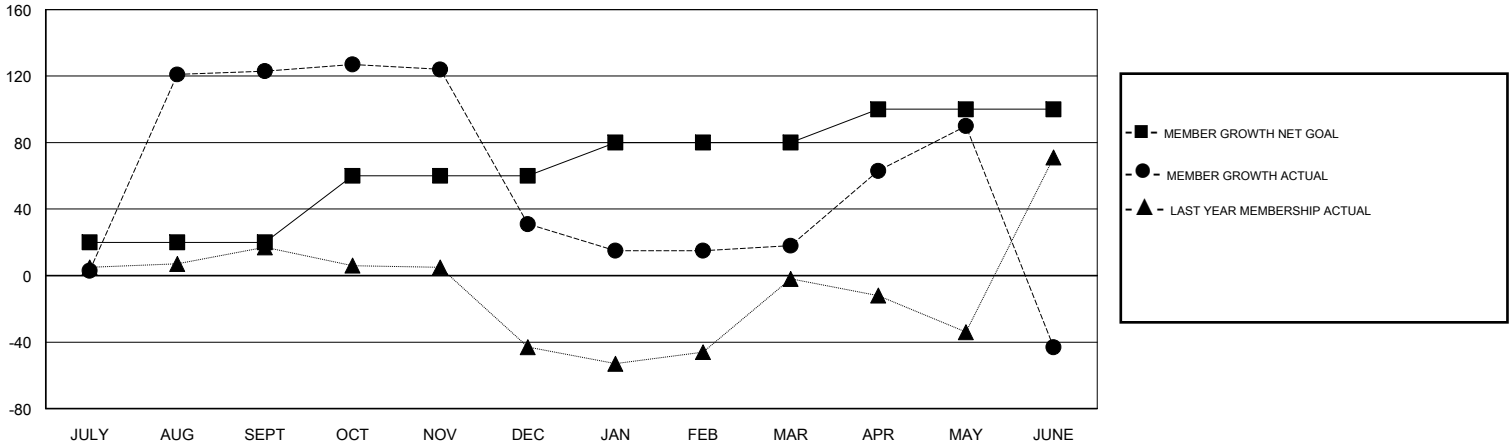
Clubs			
RESULTS FOR 2018-2019			
QUARTER	NEW CLUB GOAL	NEW CLUBS	DROPPED CLUBS
JULY/AUG/SEPT	1	6	1
OCT/NOV/DEC	2	0	2
JAN/FEB/MAR	1	0	1
APR/MAY/JUNE	1	4	0

Members			
RESULTS FOR 2018-2019			
QUARTER	MEMBER GROWTH NET GOAL	MEMBER GROWTH ACTUAL	DROPPED MEMBERS ACTUAL (including transfers)
JULY/AUG/SEPT	20	154	25
OCT/NOV/DEC	40	8	99
JAN/FEB/MAR	20	10	21
APR/MAY/JUNE	20	184	245

GOALS AND ACTUAL NEW CLUBS CUMULATIVE



GOALS AND ACTUAL MEMBERS CUMULATIVE



DROPPED CLUBS: 4	40 CLUBS OF 65 ADDED 1 OR MORE NEW MEMBERS	<u>GENDER DISTRIBUTION</u> MALE 1,129 (60.25%) FEMALE 745 (39.75%) Women Percentage Fiscal Year Goal: 39%
<u>DROPPED MEMBERS</u> DECEASED 16 CLUB CANCELLED 57 OTHER 317 TOTAL 390	<a href="#">CLICK HERE FOR CUMULATIVE MEMBERSHIP DATA</a>	TOTAL FAMILY UNIT MEMBERS 887 FAMILY MEMBERS PAYING HALF DUES 498